



CONCORD
ENGINEERING

www.concord-engineering.com

Firm Overview

Founded in 1989, Concord is a full-service engineering, energy consulting, construction management and commissioning firm. With 100 engineers, designers and energy consulting professionals across four offices, Concord delivers end-to-end whole facility solutions specializing in services that enhance performance, increase efficiency and reduce downtime for both public and private sector clients. Backed by our technical expertise and wide range of services our commitment to client satisfaction has made us leaders in many regional and international markets.



COMMERCIAL ENGINEERING



POWER ENGINEERING



HEALTHCARE



BUILDING & INFRASTRUCTURE Cx



CONCORD ENERGY



CONCORD MANAGEMENT

BUILDING YOUR TOMORROW!

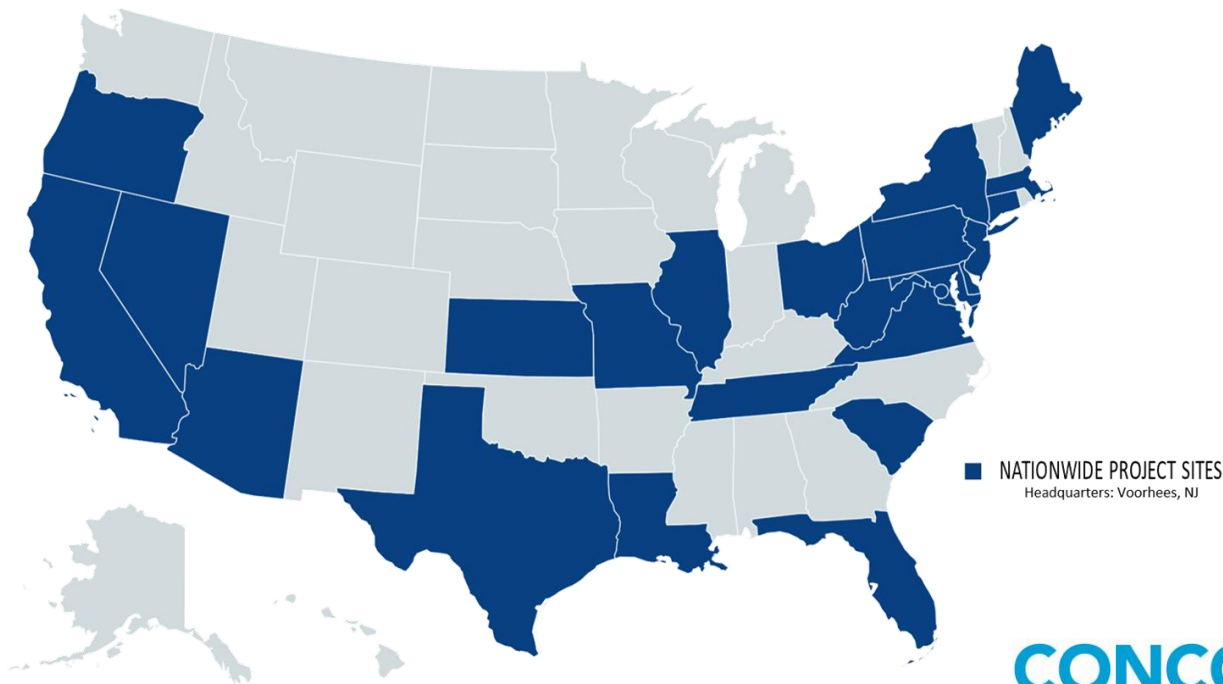
About Concord

Offices in Voorhees, Atlantic City & Princeton, NJ and Philadelphia, PA

100 Professionals

Former NJBPU, DPMC, GSA, DEP, Treasury, Stone & Webster and Other Agency/Big Firm Professionals on Staff

OSHA Trained Staff



COMMERCIAL ENGINEERING

Division Profile
Key Staff

Team Experience
Project Portfolio

Commercial Engineering

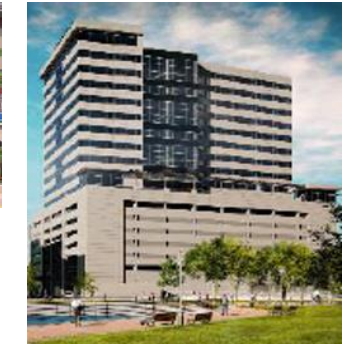
Provides full-service MEP/FP engineering, energy consulting, design-build, construction management and commissioning services for industrial facilities and high performance buildings for the commercial and institutional markets.

Markets

- Commercial Office Space
- Hospitality
- High-Rise & Multi-Family
- Government
- K-12 & Higher Education
- Healthcare & Pharmaceutical
- Utilities
- Casinos and Gaming
- Industrial & Manufacturing
- Correctional Facilities
- Data Centers

Services

- Site Analysis & Needs Assessment
- Strategic Plan
- Planning & Scheduling
- Commissioning
- ESIP Utilizing an ESCO or Self-Performing
- Energy Audits, Monitoring & Improvements
- Facility Management Consultation
- Indoor Air Quality
- Code Compliance & Design
- Energy Consulting & Analysis
- Energy Master Planning
- Building/Facility Design
- Sustainable Building Design
- Construction Documentation
- Lighting Improvements
- Preliminary Engineering, Scoping Services
- Final Engineering Design
- Construction Scheduling
- Contract Administration and Construction Management
- Construction Engineering Plans and Specifications
- Contract Administration for Federal, State or County Funded Engineering Projects



Commercial Team Experience



Commercial Engineering Key Staff



Anthony Caucci, PE
President, Commercial
Engineering

Professional Engineer
licensed in New Jersey,
Pennsylvania

BS, Mechanical
Engineering
Drexel University



Wayne Howell, PE
Director, Commercial
Philadelphia

Professional Engineer
licensed in 49 States &
District of Columbia

BS, Mechanical
Engineering
Texas A&I



Dan Cordle, PE
Director, Commercial
Voorhees

Professional Engineer
licensed in New Jersey,
Pennsylvania, New York

BS, Mechanical
Engineering
University of Missouri

BS in Education,
Mathematics
University of Missouri



John Marchiafava, PE
Chief Engineer
Voorhees

Professional Engineer
licensed in Pennsylvania,
New Jersey, Delaware,
Maryland, Mississippi

BS, Mechanical
Engineering
Drexel University

Certified GeoXchange
Designer (CGD)

Certified Energy Manager
(CEM)



Eric Taggart
Director
Atlantic City

BS, Mathematics
Drexel University

AS
Atlantic Cape Community
College

Project Highlights

- 47% Thermal Plant Energy Reduction
- Replacement of Chiller and Cooling Tower Plant on 38th Floor
- Problem: Due to Close Proximity of Other High Rises a Helicopter Lift or Crane Application WAS NOT Possible. Concord Devised Plan to Build IN PLACE Cooling Towers as well as a Rigging Path to Allow Addition of New High Efficiency Centrifugal Chillers
- Strategic Partner: Rich Energy Solutions

Construction Cost

\$6 Million

Completion Date

2018

Two Liberty Place

Philadelphia, PA

Central Utilities Plant Energy Retrofit



Design Build Contractor – Concord Management Services
Engineer of Record – Concord Engineering Group



Project Highlights

- 200,000 SF Class A Corporate Office Space
- 250,000 SF Industrial Manufacturing Plant
- LEED Gold Certified
- Designed Campus-Wide “Microgrid Ready” 69kV Substation
- New (4) Breaker Ring Bus, (2) Incoming Underground PSE&G Line Positions, (2) 69kV-13kV Transformers, 13.8kV Switchgear, New Packaged Substation Control Building
- Investigated Alternative Power Source from Adjacent Steam to Trash Facility
- Provided Support for Energy Efficiency Incentives via State of New Jersey’s Clean Energy Program & Power Purchasing Guidance

Construction Cost

\$260 Million

Completion Date

2017

Holtec International World Headquarters

Camden, NJ

Engineer of Record for Krishna P. Singh Technology Campus





Project Highlights

- Mixed Use
- (8) Stories
- 300,000 Square Feet
- 350 Residential Apartment Units
- Street Level Retail is planned around the perimeter of the building along Broad & Washington Streets.
- Total retail area is approximately 59,000 SF which includes a detached 12,000 SF retail building

Construction Cost

\$150 Million

Completion Date

2018

Lincoln Square & Train Shed

Philadelphia, PA

Engineer of Record for Core & Shell



Project Highlights

Retail and rental project in the middle of an evolving district. The project included demolishing an existing garage-like structure and small parking (44 parking spaces, some of which is made available to the public) and replace it with a six-story building made u of 44 residential units. The apartments range in cost from \$900K to \$3M.

1410 Grand is Platinum LEED certified. Some of the environmentally friendly elements include a rain harvest system, which consist of a 5 ,000 rainwater tank on the roof, and a 40-kilowatt solar array on top of the structure.

Construction Cost

\$35 Million

Completion Date

2008

1410 Grand Street

Hoboken, NJ

Engineer of Record



Project Highlights

- LEED Certified
- 350,000 Square Feet
- 11 Story Class "A" Office Space
- 7 Story Parking Garage
- 1st Floor Restaurant & Health Center
- 8th Floor Amenity Space
- State of the Art Lighting and HVAC Controls

Construction Cost

\$242 Million

Completion Date

2019

Triad 1828

Camden, NJ

Engineer of Record





Project Highlights

- Provided MEP/FP Engineering for Core and Shell & 35 New Venues
 - Design for Gaming
 - Multiple Theaters
 - 15 Restaurants
 - 13 Nightclubs/Bars
 - Spa
 - Fitness Center
 - Over 3,500 Parking Spaces
 - Gift Shops
 - Over 2,100 Hotel Rooms

The Quarter at Tropicana Casino and Resort

Atlantic City, NJ

Engineer of Record



Construction Cost

\$450 Million (Multiple Projects)

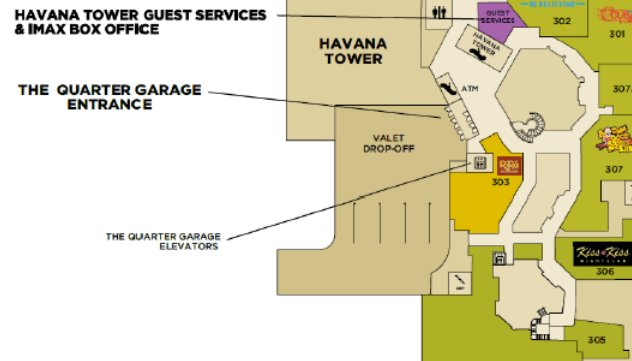
Completion Date

2004

LEVEL 2



LEVEL 3





Project Highlights

- Provided HVAC, Electrical, Plumbing, Fire Protection, Fire Alarm and Low Voltage Systems' Consulting and Design Services
- Assisted with Funding from NJ Clean Energy's "New Construction – Pay for Performance Program"
- Project Designed and Built to LEED Standards
- 533 Bed Dormitory with Ocean Views
- 72,000 SF Corporate HQ for South Jersey Gas
- 3 Story, 56,000 SF Academic Building

Construction Cost

\$220 Million

Completion Date

2018

AC Gateway Development Project

Atlantic City, NJ

MEP/FP Engineer of Record





Project Highlights

Resorts Casino and Hotel is the original gambling casino in Atlantic City opening in May, 1978

- \$50 M Casino Floor Renovation in 1998
- \$100 M, 459 Room Hotel Tower in 2002
- \$35 M Margaritaville Casino & Entertainment Rebranding in 2012
- \$7 M Landshark Bar & Grille in 2012

Completion Date

2017

Resorts Casino & Hotel

Atlantic City, NJ

Engineer of Record for Rendevous Tower, Margaritaville Expansion & Landshark Bar & Grille





Project Highlights

Hollywood Casino Toledo is located on 44 acres along Rte. 75 and features 150,000 SF of gaming space with 1,600 gaming machines and 50 gaming tables along with 20 poker tables. The complex also features a high-end steakhouse with private dining rooms, buffet, grille, center casino bar, & grille and theater. Supporting the casino is a large multi-level parking garage with 4,000 car capacity along with a 1,000 car surface parking lot. Hollywood Casino Toledo is the first Penn National Gaming Casinos to pursue a LEED certification. Toledo has obtained a LEED Silver Rating in accordance with USGBC

Construction Cost

\$150 Million

Completion Date

2018

Hollywood Casino Toledo

Toledo, OH

Engineer of Record



Project Highlights

- Originally Built 1896
- \$50 M Reconstruction of the 1st floor into open Food Hall concept with 30 new venues while maintaining conformance with National Historic Registry guidelines
- \$5 M Reconstruction of 8 Office Levels

Construction Cost

\$50 Million

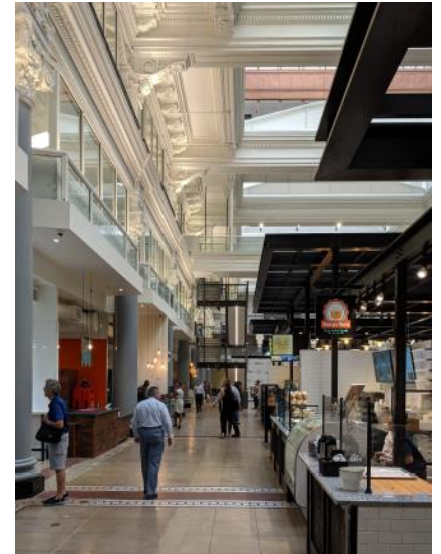
Completion Date

2018

Bourse Building

Philadelphia, PA

Engineer of Record



CAMDEN PARTNER TOWER – Camden, NJ
MEPFP Engineer of Record - \$235M
19 Story Corporate Office Building

RESORTS HOTEL/CASINO – Atlantic City, NJ
MEPFP Engineer of Record - \$125M
Rendezvous Tower – 27 Story Hotel Tower
MEPFP Engineer of Record
Multiple Thermal Plant and Hotel Upgrades – 19 Story Hotel Tower

SHOWBOAT HOTEL/CASINO – Atlantic City, NJ
MEPFP Engineer of Record - \$90M
Premier Lite Tower - 20 Story Hotel Tower
MEPFP Engineer of Record
Multiple Thermal Plant and Hotel Upgrades – Multiple Hotel Towers
House of Blues Hotel Upgrades – 20 Story Hotel Tower

2 LIBERTY PLACE – Philadelphia, PA
MEPFP Engineer of Record/Energy Partner - \$5M
Thermal Plant Upgrade - 58 Story Residential & Office Tower
MEPFP Engineer of Record
Multiple Interior Renovations - 58 Story Residential & Office Tower

GRAHAM BUILDING – Philadelphia, PA
MEPFP Engineer of Record/Energy Partner
Energy Conservation/Thermal Plant Upgrades – 20 Story Mixed-Use Office Building

FLAGSHIP RESORT – Atlantic City, NJ
MEPFP Engineer of Record/Energy Partner
Energy Conservation/Thermal Plant Upgrades – 30 Story Condominium

BELLA CONDOMINIUMS – Atlantic City, NJ
MEPFP Engineer of Record/Energy Partner
Energy Conservation/Thermal Plant Upgrades – 28 Story Condominium

HARRAHS HOTEL/CASINO – Atlantic City, NJ
MEPFP Engineer of Record - \$65M
Harbor Tower Gut/Renovation – 15 Story Hotel Tower

WESTGATE HOTEL/CASINO – Las Vegas, NV
MEPFP Engineer of Record/Energy Partner
Energy Conservation/Thermal Plant Upgrades – 30 Hotel Tower

TROPICANA CASINO/HOTEL – Atlantic City, NJ
MEPFP Engineer of Record
Multiple Interior Renovations – 32 Story Hotel Tower

BERKLEY CONDOMIUMS – Atlantic City, NJ
MEPFP Engineer of Record/Energy Partner
Energy Conservation/Thermal Plant Upgrades – 21 Story Condominium

ENCLAVE CONDOMIUMS – Atlantic City, NJ
MEPFP Engineer of Record/Energy Partner
Energy Conservation/Thermal Plant Upgrades – 27 Story Condominium

OCEAN RESORT/CASINO – Atlantic City, NJ
MEPFP Engineer of Record
Multiple Interior Renovations – 57 Story Hotel Tower

TROPICANA CASINO HOTEL – Atlantic City, NJ
MEPFP Core & Shell Engineer of Record - \$400M
THE QUARTER @ THE TROP
MEPFP Engineer of Record
30 Retail Outlets, Food & Entertainment Venues

LINCOLN SQUARE – Philadelphia, PA
MEPFP Core & Shell Engineer of Record - \$150M
(8) story, 300,000 square foot, residential component above 60,000 square foot street level retail

TRAIN SHED/SPROUTS – Philadelphia, PA
MEPFP Core & Shell Engineer of Record - \$15M
Conversion of Historic Train into Sprouts Grocery Store

SHOPS AT THE PIER – Atlantic City, NJ
MEPFP Core & Shell Engineer of Record
600,000 square foot retail outlet
MEPFP Engineer of Record
30 Retail Outlets

OCEAN (aka REVEL) CASINO HOTEL – Atlantic City, NJ
MEPFP Engineer of Record
Multiple Retail Outlets, Food & Entertainment Venues

BORGATA CASINO HOTEL – Atlantic City, NJ
MEPFP Engineer of Record
Multiple Retail Outlets, Food & Entertainment Venues

THE WALK – Atlantic City, NJ
MEPFP Engineer of Record
Multiple Retail Outlets, Food & Entertainment Venues



520 South Burnt Mill Road | Voorhees, NJ 08043 | 856.427.0200
3020 Market Street | Suite 103 | Philadelphia, PA 19104 | 215.387.1011
2311 Atlantic Avenue | Atlantic City, NJ 08401 | 609.246.7255
100 Overlook Center | 2nd Floor | Princeton, NJ 08540 | 609.375.2253

VISIT US AT CONCORD-ENGINEERING.COM
FOLLOW US AT LINKEDIN.COM/COMPANY/CONCORD-ENGINEERING.COM
E-MAIL US AT INFO@CONCORD-ENGINEERING.COM